

continuing medical
education

Multidisciplinary Gastrointestinal Cancer Symposium

From Basics to Beyond



COURSE DIRECTOR

John Mansour, M.D.

Chief, Division of Surgical Oncology
Associate Professor
Department of Surgery



COURSE CO-DIRECTOR

Michael Choti, M.D., MBA

Department Chair
Professor
Department of Surgery

Saturday, April 9, 2016

**William P. Clements Jr.
University Hospital**

William T. and Gay F. Solomon Education Center
6201 Harry Hines Blvd.
Dallas, TX 75390

Sponsored by
*UT Southwestern Division of Surgical Oncology
and the Office of Continuing Medical Education*

UT Southwestern
Harold C. Simmons
Comprehensive Cancer Center



Multidisciplinary Gastrointestinal Cancer Symposium

From Basics to Beyond

PROGRAM AGENDA - Saturday, April 9, 2016

Morning Session

- 7:15 – 8:00 **Registration and Breakfast**
- 8:00 – 8:05 Welcome and Introduction
 – **John Mansour**
- Session 1 - Colorectal Cancer**
- 8:05 – 8:15 Case Presentations and Audience
 Response – **John Mansour**
- 8:15 – 8:35 Profiling Tumors Beyond Histology
 – **David Gerber**
- 8:35 – 8:55 Peritoneal Malignancy: Are We Being
 Aggressive Enough? – **Glen Balch**
- 8:55 – 9:25 Surgical Management of Liver
 Metastases – **Michael Choti**
- 9:25 – 9:40 Case Discussion with Audience
 Participation Results – **John Mansour**
 Panel:
 Samira Syed (Medical Oncology)
 Glen Balch (Surgical Oncology)
 Michael Choti (Surgical Oncology)
 Sanjeeva Kalva (Interventional Radiology)
 Farshid Araghizadeh (Colorectal Surgery)
- 9:40 – 9:55 **Break**
- Session 2 - Gastroesophageal Cancer**
- 9:55 – 10:05 Case Presentations and Audience
 Response – **Yull Arriaga**
- 10:05 – 10:25 Staging of Patients with
 Gastroesophageal Cancer -
 Is another test useful?
 – **Matthew Porembka**
- 10:25 – 10:45 What is the Role of Radiation for
 Resectable Gastroesophageal Cancer?
 – **Jeffrey Meyer**
- 10:45 – 11:05 Update on Cytotoxic and Targeted
 Therapies for Gastric Cancer
 – **Yull Arriaga**
- 11:05 – 11:20 Case Discussion with Audience
 Participation Results – **Yull Arriaga**
 Panel:
 Matthew Porembka (Surgical Oncology)
 Jeffrey Meyer (Radiation Oncology)
 Yull Arriaga (Medical Oncology)
- Session 3 – Gastrointestinal Cancers and Inherited
Cancer Syndromes**
- 11:20 – 11:45 Inherited Risk Among Patients with
 Gastrointestinal Cancers – **Elise Watson**
- 11:45 – 11:50 Discussion and Questions
- 11:50 – 12:45 **Lunch**
- Allied Health Lunch Time Program:**
Building a Cancer Team with a Patient
Centered Approach: Palliative Medicine,
Nutrition and Psychological Support
Panel:
Stephanie Houck (Palliative Care)
Lan Vu (Surgical Oncology)
Kelli Oldham (Dietitian)
Catherine Credeur (Social Worker)

PROGRAM AGENDA - Saturday, April 9, 2016

Afternoon Session

Session 4 – Pancreas Cancer

- 12:45 – 1:00 Case Presentation and Audience Response
– **Michael Choti**
- 1:00 – 1:20 Predicting Cancer Risks of “Benign” Cysts
– **Rebecca Minter**
- 1:20 – 1:40 Role of Systemic & Radiation Therapy for Non-Metastatic
Pancreas Cancer – **Muhammad Beg**
- 1:40 – 2:00 Minimally Invasive Pancreas Surgery – **Patricio Polanco**
- 2:00 – 2:15 Case Discussion with Audience
Participation Results – **Michael Choti**
- Panel:
Udit Verma (Medical Oncology)
Muhammad Beg (Medical Oncology)
Rebecca Minter (Surgical Oncology)
Patricio Polanco (Surgical Oncology)
Jeffrey Meyer (Radiation Oncology)
- 2:15 – 2:30 **Break**

Session 5 – Hepatocellular Carcinoma

- 2:30 – 2:45 Case Presentation and Audience Response
– **Muhammad Beg**
- 2:45 – 3:00 Screening Programs and Guidelines: Changes to the
Paradigm – **Amit Singal**
- 3:00 – 3:15 Systemic Therapy Options Including Targeted Agents
– **Adam Yopp**
- 3:15 – 3:30 Liver-Directed Therapy for HCC – **Anil Pillai**
- 3:30 – 3:45 Case Discussion with Audience
Participation Results – **Michael Choti**
- 3:45 Wrap-Up and Acknowledgements – **John Mansour**
Adjourn

DISCUSSION LEADERS



John Mansour, M.D.

*Associate Professor and Chief
Division of Surgical Oncology
UT Southwestern Medical Center
Dallas, TX*

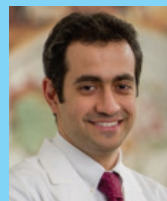
john.mansour@utsouthwestern.edu



Michael Choti, M.D.

*Professor and Chairman
Division of Surgical Oncology
UT Southwestern Medical Center
Dallas, TX*

michael.choti@utsouthwestern.edu



Muhammad Beg, M.D.

*Assistant Professor
Division of Hematology/Oncology
UT Southwestern Medical Center
Dallas, TX*

muhammad.beg@utsouthwestern.edu



Yull Arriaga, M.D.

*Associate Professor
Division of Hematology/Oncology
UT Southwestern Medical Center
Dallas, TX*

yull.arriaga@utsouthwestern.edu

Location William P. Clements, Jr. University Hospital
William T. and Gay F. Solomon Education Center
6201 Harry Hines Blvd.
Dallas, TX 75390



Target Audience Physicians and Allied Health professionals interested in the treatment of gastrointestinal cancer within the fields of family practice, internal medicine, gastroenterology, advanced endoscopy, medical oncology, diagnostic radiology, interventional radiology, general surgery, transplantation medicine, pathology and radiation oncology.

Purpose and Content The UTSW Multidisciplinary Gastrointestinal Cancer Symposium is a program that highlights important topics relevant to clinicians who are involved with the care of patients with gastrointestinal malignancies. The goal is to provide the most up to date clinical information from a multidisciplinary approach (surgical, medical, radiation, gastroenterology, interventional radiology). The attendee will have the benefit of learning about the latest advances or controversies in the management and evaluation of gastrointestinal malignancies/conditions that may impact their practice.

Learning Objectives Upon completion of this activity, participants should be able to:

- Recognize the multidisciplinary approach to managing colorectal cancers
- Recognize the latest update on treatment for gastroesophageal cancers
- Identify patients with increased risks for gastrointestinal cancers
- Identify the different approaches to treating pancreatic cancers
- Recognize systemic vs. liver directed treatment for hepatocellular carcinomas

Accreditation The University of Texas Southwestern Medical Center at Dallas is accredited by the Accreditation Council for Continuing Medical Education (ACCME) to provide continuing medical education for physicians.

Continuing Education Information The University of Texas Southwestern Medical Center designates this educational activity for a maximum of 7.0 *AMA PRA Category 1 Credits™*. Physicians should only claim credit commensurate with the extent of their participation in the activity.

UT Southwestern is an approved provider of continuing nursing education by the Texas Nurses Association, an accredited approver by The American Nurses Credentialing Center's Commission on Accreditation. This activity provides 7.08 contact hours.

Conflict of Interest All persons in the position to control the content of an education activity are required to disclose all relevant financial relationships in any amount occurring within the past 12 months with any entity producing, marketing, re-selling, or distributing health care goods or services consumed by, or used on patients. A primary mechanism to resolve identified conflicts of interest is a content review that occurs prior to the activity.

Discussion of Off-Label Use This course is meant to educate physicians with what is currently in use and what may be available in the future. There may be "off-label" use discussed in the activity. Speakers have been requested to inform the audience when off-label use is discussed.

Registration Registration entitles the participant to attend the conference, obtain all course materials, continental breakfast, lunch and refreshment breaks during the meeting. **Register online at: cme.utsouthwestern.edu/content/rp1604b**

Enrollment is confirmed upon receipt of registration form.

Cancellation Policy For cancellations, a full refund will be provided if the request is received by mail or fax PRIOR to March 21, 2016. No refunds will be provided thereafter.